

## Winter Tour 2003

### Meadville to Conneaut Lake in a roundabout way



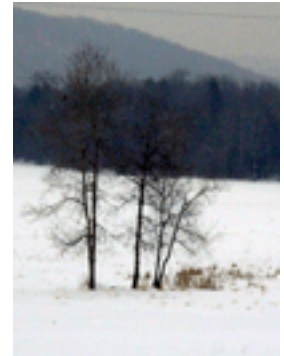
you'll pass.

Winter driving in Crawford County can be challenging, but on a clear day with the sun gleaming off the snow covered countryside, it is an experience not to be missed. This tour starts in Meadville, the county seat, and takes us through beautiful farmland and quaint communities that offer a number of points of interest to visit on a brisk winter afternoon. The tour is approximately 40 miles and should take around three hours if you stop and experience the places

Let's start by taking Mead Avenue out of town. We'll cross Mead



Avenue Bridge and take an immediate right onto State Route 102 west, locally known as Cussewago Road. This route passes through the western outskirts of Meadville. We'll follow it approximately 3 miles until it merges with Route 98



North. After merging onto 98 the scenery changes immediately, transitioning from the last outskirts of the city into more of a wide open country landscape.

Vast pasture lands and fallow fields lie buried beneath a white blanket of snow. This road is smooth and well maintained. A steep wooded hillside ascends on the western side of the road, to the right are the lower lying pastures and fields, some of Pennsylvania's most fertile farmland. Keep your eyes open and you may spot everything from horses and livestock to herds of deer and circling hawks.

We've been following 98 North approximately 12 miles. Now we'll be turning left onto Springboro Road (State Route 4010). U.D.'s Tavern is on this corner.

Springboro Road is a winding secondary road that connects routes 98 and 18. It is a scenic drive that curves past many farms and cuts through Amish country. Don't be surprised to pass a horse and buggy carrying an Amish family to town. After about 3 miles you'll pass through the village of Hickernell, which is basically a crossroads with Hickernell United Methodist Church on the corner.



About 2 miles ahead we come to our first stop, Chupp's Country Cupboard, an Amish store featuring bulk candy, spices and baking supplies at incredible prices. Fresh eggs and cheese are also available along with a wide selection of dry goods. Plan on stocking up on hard to find spices and supplies. A few dollars will go a long way here. You might also want to pick up "Dutch Blitz", a fast paced Amish card game

that is fun to play on cold winter evenings.

Now we'll follow Springboro road a few miles further into the town of Springboro, a community once renowned for its natural springs. We'll descend the hill into town, and take a left onto Route 18 South at the traffic light. Keep an eye open for some of the beautiful Victorian homes you'll pass as you travel through town.



Approximately 2 miles to the south we'll pass Canal Park, just north of Conneautville. This small historical park is situated along the Erie Extension Canal and was once the site of a resting stop for canal travelers. The remains of the canal run through the park and form a wetland area that is home to a variety of birds and other wildlife.



This park is generally quiet and serene, however it is home to a number of community events such as the Annual Canal Park Summer Music Festival held the first Saturday of August each year.

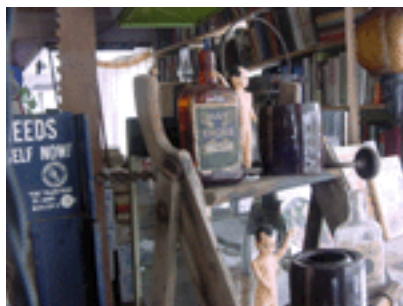


Just past Canal Park, we'll enter the borough of Conneautville. This is a quiet community that was founded in 18?? and is named after an Indian word meaning "snow place". A perfect destination on a winter driving tour! A number of beautiful century homes are situated along Route 18 as you travel through town.

As we continue south on 18, we'll pass through a beautiful area of farmland with a wide landscape and panoramic views. The peaceful snow covered scenery is relaxing and tranquil.

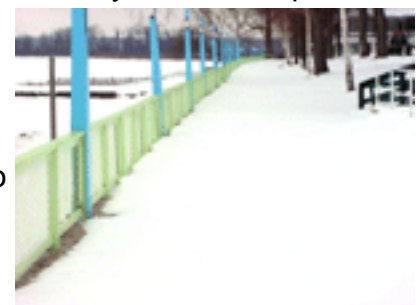


Six miles south of Conneautville we arrive in Harmonsburg.



We'll pass straight through the stoplight, unless you want to stop at Granny's, a rustic looking antique shop at the corner of 18 and Harmonsburg Road. This place has been in operation for years and is packed with antiques and memorabilia. If you like antiques and it's open when you pass by, it's worth a stop.

After passing through the stoplight, travel about seven-tenths of a mile and bear right onto Route 618 (just past Nighthawks Tavern on your right). This will take us through the west side of Conneaut Lake, a tourist area that is home to the historic Conneaut Lake Community Park, a





century old amusement park. Although the park is closed during the winter, you can still stop by the Hotel Conneaut and get a bite to eat, or take a walk along the snow covered boardwalk.

As you travel Route 618, you will notice a number of restaurants and nightclubs that are open year round and offer some great entertainment opportunities. After a few miles,



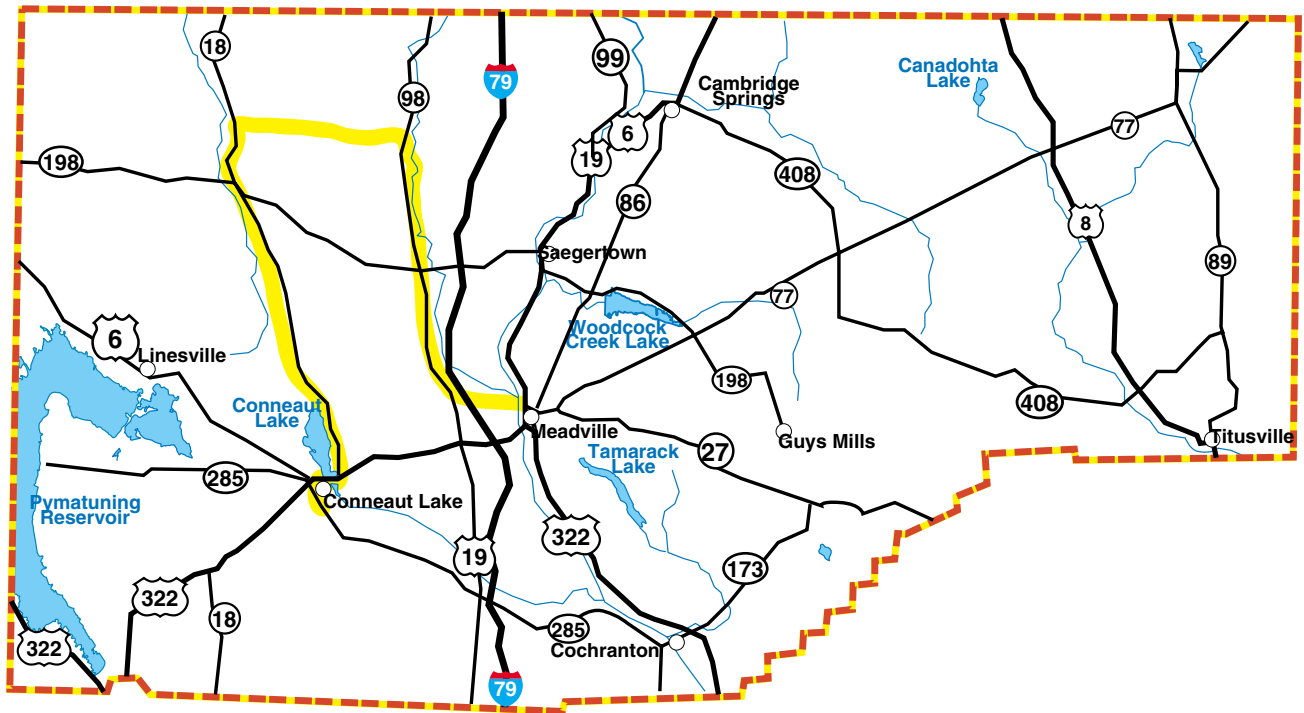
618 will end at Route 6. We'll turn left onto 6 and take it into Conneaut Lake, a thriving tourist community located on the shores of Pennsylvania's largest natural lake. Driving through town on Route 6, you'll see variety of shops and restaurants. Take some time to stop and look around and check out the local shops.



Now we'll continue on to our last stop, Conneaut Cellars Winery, just a few tenths of a mile past the last stop light in Conneaut Lake. Take a right into the parking lot of this award winning winery. Call ahead to see if you can catch one of the daily tours and wine tastings. Browse the gift shop that features a variety of gifts and gift baskets.



Well, we've reached the end of our tour. Just take a right out of Conneaut Cellars and you'll be headed back to Meadville where we started.



**Starting Point:** Cussewago Road (State Route 102) Meadville, Pennsylvania

**Roads To Take:** Cussewago Road (State Route 103), Route 98 North, Springboro Road (State Route 4010), Route 18 South, Route 618, Route 6

**Points of Interest:** Chupps Country Cupboard, Canal Park, Conneaut Lake Community Park, Conneaut Cellars Winery.

**Communities:** Hickernell, Springboro, Conneautville, Harmonsburg, Conneaut Lake

